

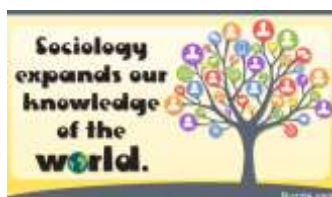
## Sociology

### Course Details

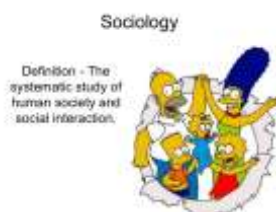
Sociology, although a brand new course, builds on skills developed in the sciences and humanities and enables you to progress into a wide range of other subjects.



The integral elements of the course include the study of Contemporary UK society, focusing on sociological theories and methods, through the core themes of socialisation, culture and identity, social differentiation, power and stratification.



Topics of study include **Families and Households, Education, Crime and Deviance** and **Beliefs in Society**. There is a need to understand theoretical perspectives in relation to these topics and the methods used to gain relevant data and information regarding patterns and trends.



**Sociological study** allows you to understand why and how people act or think, with a focus on the external influences which may impact choices. It allows for an increased awareness of diversity and to focus on your own personal identity, role and responsibility within society. It will allow you to develop a lifelong interest in social issues.

### A-level Education

- The role and function of education.
- Different types of education.
- Reasons for the different achievements of social groups by class, gender and ethnicity.
- Relationships and processes within schools; teacher/student relationships, student subcultures.
- The role and impact of educational policies.

### A-Level Families and Households

- Types of families, diversity and the link to social change
- Changing patterns of marriage, divorce, cohabitation, childbearing
- Gender roles, domestic labour and power relationships within the family
- Nature of childhood and changes in the status of children within the family
- Demographic changes; birth rate, death rate, life expectancy, ageing population, migration

### A-Level Crime and Deviance

- What is crime, deviance, social order and social control?
- The social distribution of crime by social class, gender, ethnicity
- Globalisation and crime in contemporary society; the media and crime; green crime; human rights and state crime
- Crime control, surveillance, prevention, punishment, victims, the role of the criminal justice system

### A-Level Beliefs in Society

- Ideology, science and religion
- Relationship between change in society and religious beliefs and practices
- Religious organisations including cults, sects, New Age movements
- The significance of religion today, secularization and the spread of religions.

## Assessment

There are three examinations to be completed at the end of Year 13. Each assessment is 2 hours in length and carry equal weight with regard to marks.

## Background Recommendations

It is recommended that candidates will have achieved at least a grade 6 in English at GCSE. As the course has connections to the humanities, it is also recommended that candidates will have also achieved at least a grade 6 in History, Geography and/or Religious Studies.

## Skills Required

Candidates will be expected to 'read around' the topics covered and be prepared to work on essay writing and analytical skills, as well as questioning and debating skills.

## Extra-Curricular

It is hoped that the department can use outside speakers, can visit a criminal court to observe how the judicial system operates, visit alternative places of worship and to practise small scale research projects.

## Future Career Prospects

The skills that Sociology encourages are unequivocal: the ability to think and write articulately, to explain complex ideas clearly, to question and challenge presupposed ideas about the world, to see things in a much broader context.

Students of Sociology often go on to further their learning at university to enable future careers in the criminal justice system as solicitors, lawyers, police officers or probation officers. Many may take up careers linked to family services, social services or to work in the education profession.

## For More Information

Students interested in studying Sociology, should contact the relevant member of staff.

### Subject Staff

Mrs S Cooper BA (Hons), P.G.C.E

### Head of Department

Mrs S Cooper BA (Hons), P.G.C.E

### Syllabus

Sociology

### Current Exam Board

AQA

### Website

Further details of this course can be found on the exam boards' website.

[www.aqa.co.uk](http://www.aqa.co.uk)



Capenhurst Lane, Whitby, Ellesmere Port, Cheshire, CH65 7AQ

Tel: 0151 355 2373 Attendance Line: 0151 513 4453

Email: [admin@email.epchs.co.uk](mailto:admin@email.epchs.co.uk) [www.epchs.co.uk](http://www.epchs.co.uk)

Headteacher: Mrs C. Vile B.Ed. Hons

