


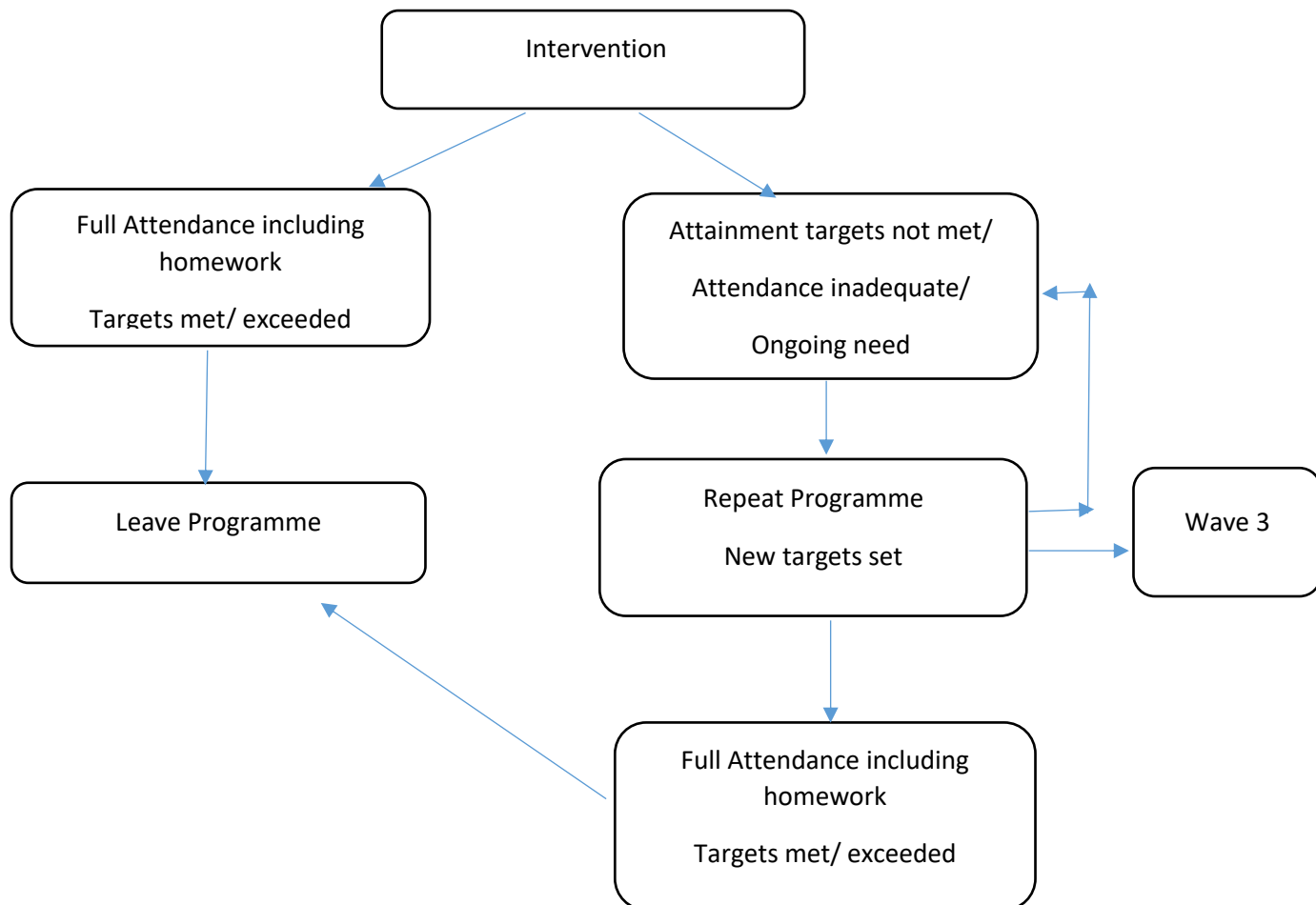
Catch Up / Intervention Policy

Ellesmere Port Catholic High School



Approved by:	Mr J Coucill, Chair of Governors 
Lead of Review:	Mrs V Marsland, SENCO
Last reviewed on:	May 2021
Next review due by:	April 2022

Aims
<p>To describe the structure which identifies and enables gaps in learning from KS1 and 2 to be identified and targeted.</p> <p>To ensure that staff understand the structure whereby pupils are allocated to appropriate, targeted interventions.</p>
Objectives
<p>To ensure that a consistent approach is adopted.</p> <p>To establish a clear process by which intervention will take place and how it will be evaluated/recorded.</p>
Types of Intervention
<p>Wave 2 - Small Group Catch Up intervention for Year 7 and 8 pupils provided by KS2 teachers for Numeracy and Literacy.</p> <p>Wave 3 – One to one intervention for those students identified as having specific learning needs.</p> <p>Small group intervention for year 7, 8 and 9 pupils provided by a dyslexia specialist teacher for phonic and spelling catch-up.</p>
Outline
<p>Pupils are identified by subject department staff using a combination of KS2 data, baseline assessment and teacher assessment.</p> <p>Pupils will be allocated to intervention sessions outside of their usual English, Maths and R.E. lessons.</p> <p>They will attend the programme for 1 term, to include baseline assessment, individual target setting, progress assessment and targeted homework via the SAM Learning platform.</p> <p>Following the assessment they will either come off the programme, repeat or be assessed for further intervention.</p>



Criteria for Selection
Wave 2 - Any pupil who has been assessed as working below age related expectations in Literacy and Numeracy can be put forward to the intervention team by Department Staff. The intervention team will liaise with Department staff regarding allocation of places. Wave 3 – Any pupils identified as having dyslexic tendencies or pupils who have been through the wave 2 intervention and require more precision teaching.
Requests for Intervention Support
Wave 2 – A referral should be made to the intervention team. Wave 3 – Referrals are made either following dyslexia screening or from the Wave 2 intervention staff.

Monitoring
Students will be allocated a sheet on which their attendance, targets and engagement with homework are recorded. The intervention teacher is responsible for monitoring and adjusting the programme as required. They will also liaise with Heads of Subject Department and Heads of Year regarding attendance and behaviour for learning.
Assessment
Each session will be reviewed and outcomes used to inform planning for the next session. By the end of the intervention pupils should be able to work effectively in their personal target areas.