



# Ellesmere Port Catholic High School

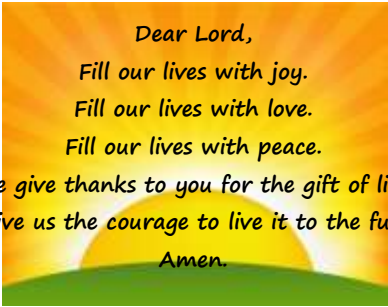
## Wk. 1 PARENT BULLETIN 15<sup>th</sup> Mar 2021

**Our Vision...**  
Excellent teaching.

**Our Vision...**  
Strong Catholic ethos.

**Our Vision...**  
Exemplary behaviour and personal standards.

**Our Vision...**  
Ensuring every child is known.



**Our Vision...**  
At the heart of the community.

**Our Vision...**  
High expectations of everyone.

**Our Vision...**  
Excellent leadership at all levels.

**Our Vision...**  
Keeping children safe in education.

### Lateral Flow Test Form Group Times (parental consent permitting)

	Mon 15.03	Tue 16.3	Wed 17.03	Thu 18.3	Fri 19.3
08:45	7B + 7J + 7K	8B + 8J + 8K	10B + 10J	7B + 7J	8B + 8J
09:45	7M + 7R + 7T	8M + 8R + 8T + 8C	10K + 10M	7K + 7M	8K + 8M
11:15	7L + 7C	9B + 9J	10R + 10T + 10C	7R + 7T	8R + 8T + 8C
13:00	12B + 12R + 12C	9K + 9M	11B + 11J + 11K	7L + 7C	9B + 9J + 9K
13:30	13A + 13J + 13L				
14:00		9R + 9T + 9C	11M + 11R + 11T + 11C		9M + 9R + 9T + 9C

Do you follow to keep up to date with all that is happening at EPCHS?

Facebook - <https://www.facebook.com/EllesmerePortCatholicHighSchool/>

Twitter - @EPCH\_School



## Ellesmere Port Catholic High School



### *Headteacher Message*

Dear Parents and Guardians,

Thank you for your support during what has been an emotional week for our school community following the loss of one of our beloved staff members, Mrs Ford.

There has been an overwhelming outpouring of love for Vickie and her family, and our school chapel has been a place where we can fondly remember our colleague.



Have a lovely weekend and please let us know if we can support in any way.

*Mrs Vile*

Do you follow to keep up to date with all that is happening at EPCHS?

Facebook - <https://www.facebook.com/EllesmerePortCatholicHighSchool/>

Twitter - @EPCH\_School



## Ellesmere Port Catholic High School

"A friend is one that knows you as you are, understands where you have been, accepts what you have become, and still, gently allows you to grow."

—William Shakespeare



Thank you Lord  
for all your blessings to me and my family.  
For the strength you give me each day,  
for my friends  
and for all the people around me,  
who make life more meaningful.  
Thank you God. Amen.

Do you follow to keep up to date with all that is happening at EPCHS?

Facebook - <https://www.facebook.com/EllesmerePortCatholicHighSchool/>

Twitter - @EPCH\_School



## Ellesmere Port Catholic High School



### *Notifications*

Our first week of lateral flow testing has been a success and I would like to stress how proud we are of the behaviour and conduct all our students have shown with regards to the whole process. Please say a massive well done to them and we will do the same in assemblies next week.

*Mrs Vile*

- **6<sup>th</sup> Form**

As you were aware on March 5<sup>th</sup> Year 11 had the opportunity to take part in a taster day so they could experience 5 A-Level subjects, to enhance their knowledge and understanding of our curriculum offer at Key Stage 5. The next stage in the application process for our successful 6<sup>th</sup> form is to complete an initial choice form. From the information provided in this form we will then construct the options blocks which will form part of their final application form which will be available after the Easter break. As the option blocks will be based on the choices made in this form we ask that students think carefully and discuss their thoughts and decisions with their parents/guardians as well as subject staff so they choose the best options for them and their future career path. A reminder that there is also information on all the subjects we offer in the 6<sup>th</sup> form section of the school's website.

**Do you follow to keep up to date with all that is happening at EPCHS?**

Facebook - <https://www.facebook.com/EllesmerePortCatholicHighSchool/>

Twitter - @EPCH\_School



## Ellesmere Port Catholic High School

The closing date for the initial choice form is Wednesday 31<sup>st</sup> March.

Please do not hesitate to contact me if you have any further questions in regard to this or any other issue relating to our 6<sup>th</sup> form.

**Link to the initial choice application form:** <https://forms.gle/NTZ8SbiBuRo9bDNHA>

*Mrs Henderson*

- **Parents Evening**

Due to the disruption we have had this year we have revised the dates for the remaining Parents Evenings. The date are as follows:

6<sup>th</sup> Form – Thursday 25<sup>th</sup> March  
Year 11 – Wednesday 31<sup>st</sup> March  
Year 7 – Thursday 22<sup>nd</sup> April  
Year 8 – Thursday 29<sup>th</sup> April  
Year 10 – Thursday 6<sup>th</sup> May

The Parents Evenings will still take place remotely and we will send reminders nearer the time.

*Mr Laing*

- **Lateral Flow Testing**

**This week we have carried out over 1000 student tests in school and staff have moved to home testing.**

From next week students who are taking part in the lateral flow testing will be provided with a home test kit. This will contain tests to be carried out at home.

After a student has completed the test, results need to be reported to school and to the NHS.

**Do you follow to keep up to date with all that is happening at EPCHS?**

**Facebook -** <https://www.facebook.com/EllesmerePortCatholicHighSchool/>

**Twitter -** @EPCH\_School



## Ellesmere Port Catholic High School

You will be provided with a link to 'Test Register' which is what you will use to record the results. This is a two-step process and only takes a minute to complete.

The link to the Test Register will be sent to parents/guardians and students who are over the age of 13 will also receive the link to their school email. The results only need to be submitted once per test.

More information will be provided with the student home test kits.

*Mrs L Hughes*

- **Collecting household home testing kits**

Please be advised that healthcare locations including vaccination centres do not hold or distribute home testing kits. Attending these locations risks overcrowding and creates additional work for already busy NHS staff.

Options for home testing are:

- From the 15 March home testing kits for use by students will be distributed to all secondary age pupils
- Since 1 March household testing for anyone age 11 and above living (or in a support/childcare bubble) with someone who attends or works in a school is available by attending a local collection centre these collection centre locations and opening times can be found by using the following link <https://find-covid-19-rapid-test-sites.maps.test-and-trace.nhs.uk/>

*Mr C Jones*

**Do you follow to keep up to date with all that is happening at EPCHS?**

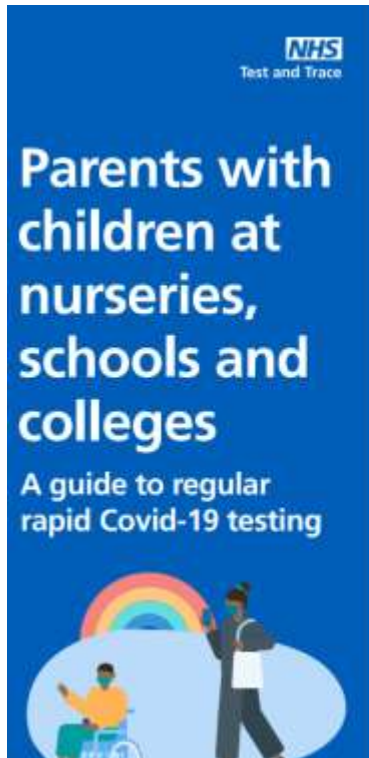
**Facebook -** <https://www.facebook.com/EllesmerePortCatholicHighSchool/>

**Twitter -** @EPCH\_School



# Ellesmere Port Catholic High School

- A guide to regular rapid Covid-19 testing



## Regular rapid testing is now available for parents, their households and bubbles.

Regular rapid testing is a fast and easy way to find out if you have coronavirus and help protect your loved ones and community. It's free and takes around 30 minutes.

## Why introduce regular rapid testing?

Up to 1 in 3 people who have Covid-19 have no symptoms and could be spreading it without knowing.

Regular rapid testing is now available for parents of nursery, school children and college students. As well as adults in their households, childcare and support bubbles.

Regular testing for people without symptoms is already taking place across the country. Thousands of people who didn't know they had the virus have been able to take action to stop the spread of the disease.

As lockdown restrictions ease, getting into the regular habit of twice weekly testing will play an important role in getting back to normal; alongside the vaccine, following the hands, face, space guidance, and social distancing measures.

## Regular testing for school staff and students

Regular rapid testing is already available to all staff at nursery, primary and secondary schools and colleges.

Secondary school and college students aged 11 and above will continue to access regular rapid tests directly through their school or college. And we continue to encourage them to get tested.

On return they will initially be supervised while testing at school and then continue to test themselves at home with test kits they will get from school or college.

Nursery and primary school children are not being asked to be tested as evidence continues to show that children and young people are at low risk from Covid-19 and are very unlikely to get seriously ill.

## What is the benefit to you?

By taking part in regular rapid testing, you'll be protecting yourself and your loved ones. And helping us all get back to a more normal way of life.



Do you follow to keep up to date with all that is happening at EPCHS?

Facebook - <https://www.facebook.com/EllesmerePortCatholicHighSchool/>

Twitter - @EPCH\_School



# Ellesmere Port Catholic High School

## How does it work?

It's a simple swab test you can do at home, school, work or test site, using a Lateral Flow Device (LFD). It takes around 30 minutes to find out if you have the virus.

The test detects viral proteins that are present when someone has Covid-19. Research from Public Health England and Oxford University shows that they pick up the vast majority of people in the most infectious stage of the disease. With up to 1 in 3 people who have the virus showing no symptoms – they could be spreading it without knowing.

**Testing should take place twice a week, every three – five days, ideally in the morning. Why not add this to your morning routine?**

If you test negative, you can continue to go to work. You should still strictly follow all other government guidelines and avoid all unnecessary contact. If you, your household or bubble test positive, you should all self-isolate immediately. And then the person who has tested positive should also take a confirmatory PCR test and follow latest government guidance.

For more information visit [gov.uk/guidance/understanding-lateral-flow-antigen-testing-for-people-without-symptoms](https://www.gov.uk/guidance/understanding-lateral-flow-antigen-testing-for-people-without-symptoms)



YouTube Introduction to Rapid Lateral Flow testing



## Reporting your test

You should **report your results online straight away**, even if your result is negative or void. It's easy to do at: [gov.uk/report-covid19-result](https://www.gov.uk/report-covid19-result)

Results can also be reported via **telephone by calling 119** (free from mobiles and landlines). **Lines are open every day, 7am to 11pm.**

If you have tested positive, you can also check to see if you are eligible for the £500 Test and Trace Support Payment.



## Where can I get tested?

If you are a parent or adult of a household, childcare or support bubble you can either:

1. Get an assisted test at work if it is available.
2. Attend a test site to get tested (where you will be able to see how to take the test) or pick up tests to do at home.
3. Order a test online to do at home.

To find out how to get a free rapid Covid-19 test visit [gov.uk/coronavirus-school-household-testing](https://www.gov.uk/coronavirus-school-household-testing)

Regular rapid testing is for those without symptoms of Coronavirus. If you have symptoms, you should continue to book through [nhs.uk/coronavirus](https://www.nhs.uk/coronavirus)

Do you follow to keep up to date with all that is happening at EPCHS?

Facebook - <https://www.facebook.com/EllesmerePortCatholicHighSchool/>

Twitter - @EPCH\_School






**NHS**  
Test and Trace

## Parents with children at nurseries, schools and colleges

A guide to regular rapid Covid-19 testing



### Regular rapid testing is now available for parents, their households and bubbles.

Regular rapid testing is a **fast and easy** way to find out if you have coronavirus and help protect your loved ones and community. **It's free and takes around 30 minutes.**

### Why introduce regular rapid testing?

**Up to 1 in 3 people** who have Covid-19 have no symptoms and could be spreading it without knowing.

Regular rapid testing is now available for **parents of nursery, school children and college students**. As well as adults in their households, childcare and support bubbles.

Regular testing for people without symptoms is already taking place across the country. Thousands of people who didn't know they had the virus have been able to take action to stop the spread of the disease.

As lockdown restrictions ease, getting into the **regular habit of twice weekly testing** will play an important role in getting back to normal; **alongside the vaccine, following the hands, face, space guidance, and social distancing measures.**

### Regular testing for school staff and students

Regular rapid testing is already **available to all staff** at nursery, primary and secondary schools and colleges.

Secondary school and college students aged 11 and above will continue to access regular rapid tests directly through their school or college. And we continue to encourage them to get tested.

On return they will initially be supervised while testing at school and then continue to test themselves at home with test kits they will get from school or college.

**Nursery and primary school children are not being asked to be tested** as evidence continues to show that children and young people are at low risk from Covid-19 and are very unlikely to get seriously ill.

### What is the benefit to you?

By taking part in regular rapid testing, you'll be protecting yourself and your loved ones. And helping us all get back to a more normal way of life.



Do you follow to keep up to date with all that is happening at EPCHS?

Facebook - <https://www.facebook.com/EllesmerePortCatholicHighSchool/>

Twitter - @EPCH\_School

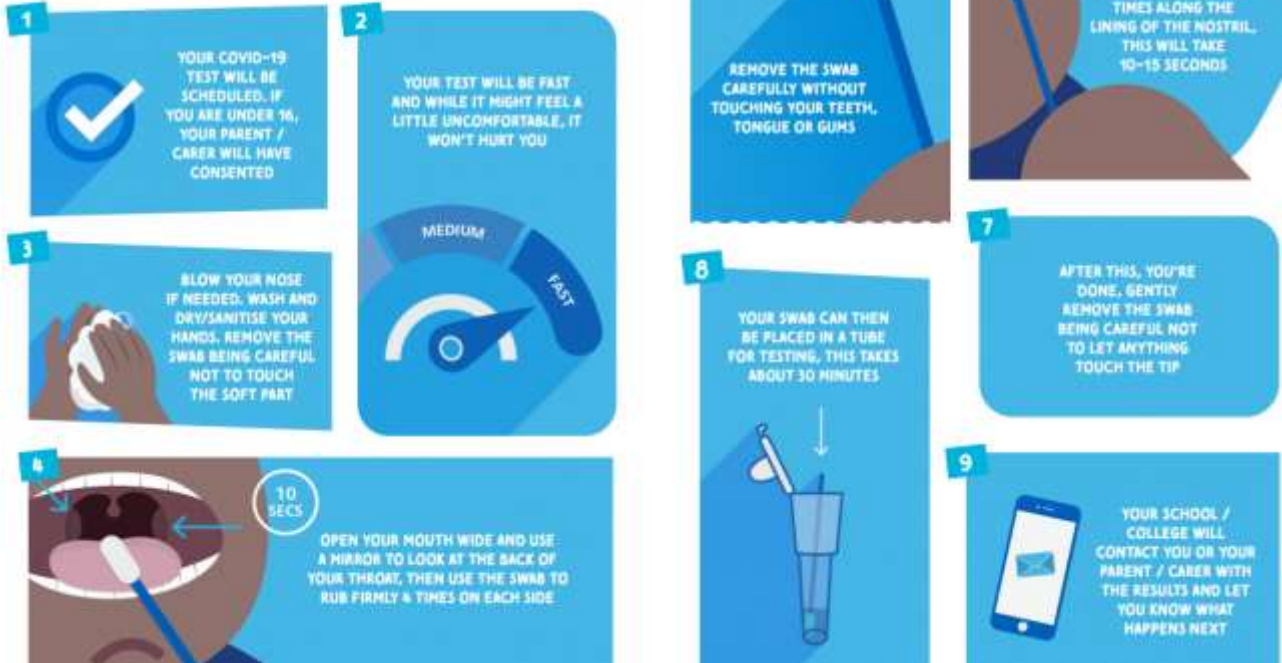


# Ellesmere Port Catholic High School



## HOW TO DO YOUR TEST

WHILE THIS IS A SELF-SWAB TEST, THERE WILL BE A TESTING HELPER WHO WILL OVERSEE THINGS AND PROVIDE HELP IF YOU NEED



- **Census 2021 (Message from CWAC School Relationships Team)**

The census is a survey that happens every 10 years and gives us a picture of all the people and households in Wales and England.

The government, local councils, charities and many other organisations use census information to decide how to spend billions of pounds on services every year. This includes spending on transport, education and healthcare. By taking part in the census, you'll help make sure your community gets the services it needs.

To make sure money is spent where it's most needed, it's important that the census counts everyone.

Do you follow to keep up to date with all that is happening at EPCHS?

Facebook - <https://www.facebook.com/EllesmerePortCatholicHighSchool/>

Twitter - @EPCH\_School



## Ellesmere Port Catholic High School

You must complete the census by law. Look out for your pack in the post. It will show you how to complete your census questionnaire. There will be plenty of help for people who need it. Your answers are protected by law and will be kept confidential.

Find out more: [www.census.gov.uk](http://www.census.gov.uk)

National 2021 Census Contact Centre: 0800 141 2021  
England NGT (text relay service) (18001) 0800 141 2021  
Language helpline: 0800 587 2021

Cheshire West and Chester Council are operating a local Census Support Centre to provide advice and support for completing the census to local residents. The contact number is 0300 123 7728 and the opening hours are Monday - Friday: 9am - 5pm.

- **Reading Achievements**

TOP myON Readers this week are:

**YEAR 7**

Flourish U, Harry W, Aaron T, O'Shae S, Leonie Scott, Olivia P, Darcy Muir, Errin McLaughlin, Alexandra Speirs, Conor Mc, Alucia E.

**YEAR 8**

Vincent C, Ryan L, Beth H, Summer G, Max S, Joel Mallon, Katie Jenkins, Ellis CR, Roxy P, Christian S, Freya P.

**YEAR 9**

Oliver S, Martin S, Pascal R, Callum P, Molly H, Thomas E, James G.

Top Quizzers with Accelerated Reader:

Keira J, Olivia P, Rosie P, Kaysi F, Tia S, Flourish U, Alfie P, Sienna T, Tia A, Sebastian L, Tyra R, Taylor W, Riley M, Aaron T, Alexandra S, Alfie RE, Katie J, Christian S, Isabelle L, Joel M, Freya P, Ellis CR.

Do you follow to keep up to date with all that is happening at EPCHS?

Facebook - <https://www.facebook.com/EllesmerePortCatholicHighSchool/>

Twitter - @EPCH\_School



## Ellesmere Port Catholic High School

- **SIXTH FORM INFORMATION & GUIDANCE**

### **STEM SUMMER WORK EXPERIENCE AT DARESBURY LABORATORY**

A reminder that the **Science and Technology Facilities Council at Daresbury Laboratory** are encouraging applications for their online **STEM** work experience programme. This is for students in **Years 10-12**. It will be for a duration of **one week in either July or August**. The programme meets relevant Gatsby benchmarks. The **closing date for applications is next week on 15th March**. You can find out more about the programme and apply via this link

<https://stfc.ukri.org/about-us/work-with-us/work-experience/workexperienced/>

### **UK UNIVERSITY AND APPRENTICESHIP SEARCH VIRTUAL FAIR**



The UK University & Apprenticeship Search Virtual Fair is **taking place on 17<sup>th</sup> March 2021, 12pm-6pm**. This is a fantastic opportunity for students from Years 11, 12 and 13 to explore **over 100 universities, colleges and apprenticeship providers** from across the UK. It is an opportunity to engage with Admissions Officers and Student Ambassadors from Universities to have your questions answered. There will also be virtual campus tours and 10 live webinars taking place on a range of subjects from apprenticeships to writing a personal statement. For more information or to register go to [www.ukunisearch.vfairs.com](http://www.ukunisearch.vfairs.com)

Do you follow to keep up to date with all that is happening at EPCHS?

Facebook - <https://www.facebook.com/EllesmerePortCatholicHighSchool/>

Twitter - @EPCH\_School



## Ellesmere Port Catholic High School

### **WHAT CAREER LIVE AND WHAT UNIVERSITY LIVE - 19<sup>th</sup> & 20<sup>th</sup> MARCH – FREE VIRTUAL EVENT**

'What Career Live' and 'What University Live' is a virtual event taking place on **19th March (10am-5pm) and 20th March (11am-3pm)**. It will give students the opportunity to listen to and speak to universities and companies in real time, get expert advice and benefit from 1-to-1 support to help kick start their futures. There will be talks from universities and companies (both real time and on demand), workshops, a CV clinic, a US university zone, a creative hub, a parent's lounge, a careers advice lounge, a disability support hub and a 'Buskers Corner' where you can listen to and watch performances by students from the Access Creative College. This event is **free but tickets need to be booked in advance**.

To do this and for more information go to [Virtual Event - 19 & 20 March 2021 | What Next? \(whatcareerlive.co.uk\)](https://www.whatcareerlive.co.uk)

Do you follow to keep up to date with all that is happening at EPCHS?

Facebook - <https://www.facebook.com/EllesmerePortCatholicHighSchool/>

Twitter - @EPCH\_School